

Getting Started with nanoMCA-SP

1. Install labZY-MCA software.
2. Install the USB driver found on the supplied flash drive or downloaded from www.labzy.com.
3. Connect the "IO" port of the nanoMCA using the supplied USB cable to an available USB port on your computer.



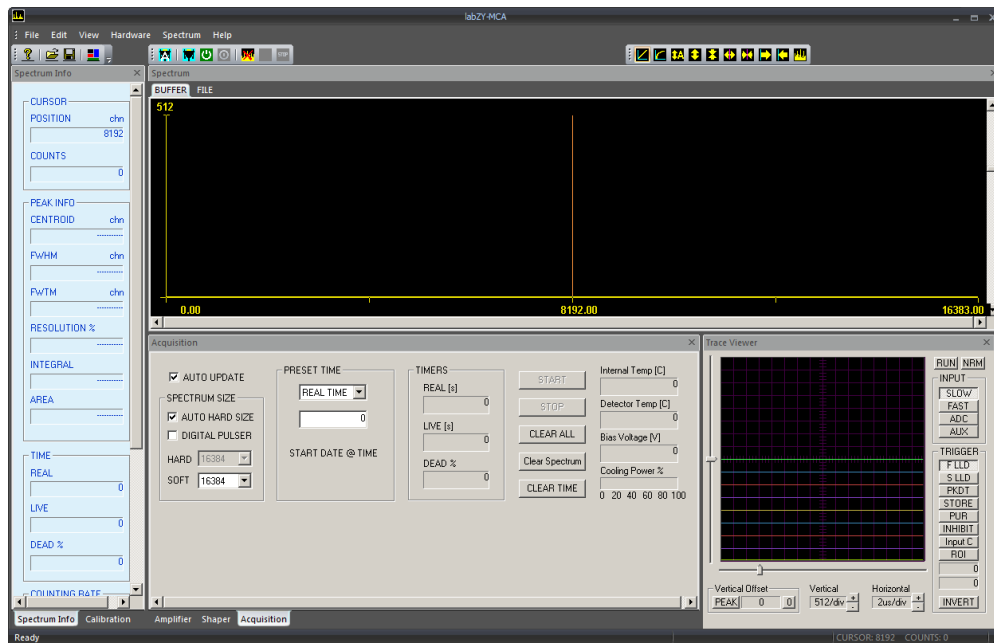
4. Turn the nanoMCA-SP ON. The red LED should be flashing quickly for about 15 seconds.



5. Following the flashing red the LED should become a steady green.



6. Start the labZY-MCA application. It should look like as shown below. If not, refer to labZY-MCA manual about executing the Default Layout shortcut.



7. Press the first button from the left (A) in the second toolbar (HARDWARE CONTROL) above the spectrum window of the labZY-MCA.



Wait until the search finishes and the application connects to the hardware

8. If the nanoMCA-SP is not found wait 2 minutes and try again. If there is no connection the most probable cause is failure of the USB driver installation. Reinstall the USB driver.